



VIRGINIA SAFARI PARK



180 ACRE DRIVE THRU ADVENTURE

NATURAL BRIDGE



GUIDE BOOK

CELEBRATING 25 SEASONS!



A Visitor's Souvenir Guide
to the Park Animals

WELCOME TO

VIRGINIA SAFARI PARK

When Virginia Safari Park first opened its gates for business, we felt there was a need and desire for people to be able to see and experience wild animals in a more natural environment. It's hard to believe, we're now celebrating 25 years of wild and adventurous family fun – with you – and having accomplished that lofty goal! With your support, we've also been able to support wildlife conservation efforts in 135+ countries globally through grants, public education, captive breeding programs & habitat preservation.

Within the 180 acres of Virginia Safari Park, you can see animals run and frolic with abandon...or block your path...or lay flat-out in the sun...the choice is always theirs. Our animals are free to roam. We encourage guest interaction by allowing visitors to feed the animals from their cars with our specialty grain.

But the fun doesn't stop after your drive through the Safari! You can also experience our animals eating from the palm of your hand while exploring our Village walk-thru. From extremely tall giraffes to tiny parrots, you will be left in awe!

Enjoy your visit to Virginia Safari Park today and see why so many people return year after year, making us one of Virginia's most popular attractions. And thank you for joining us on this "wild" journey. We look forward to the next 25 years!



Mark each animal off as you see them!

DISCOVER

4 - 5 HOOFED, ANTLERED ANIMALS

Axis Deer
Fallow Deer (chocolate, spotted & white)
Japanese Sika Deer
Pere David's Deer
Rocky Mountain Elk

6 - 9 HOOFED, HOLLOW-HORNED ANIMALS

Bison
Blackbuck
Eland
Nilgai
Nyala
Scimitar Horned Oryx
Scottish Highland Cattle
Water Buffalo
Watusi
White-Bearded Wildebeast
Yak

10 CAMEL, LLAMA

Bactrian Camel
Dromedary Camel
Llama

11 GIRAFFE

12-13 SAFARI DRIVE-THRU MAP

14 PIGS

Kune Kune Pig
Warthog

14 ZEBRA

15 RHINO

16 BIRDS

Emu
Ostrich
Rhea

17 ANIMAL ENCOUNTERS

18-21 SAFARI VILLAGE

ARTIODACTYLA

Hoofed animals with an even number of toes

FAMILY: CERVIDAE

Deer-Hoofed, antlered animals

AXIS DEER

Axis axis

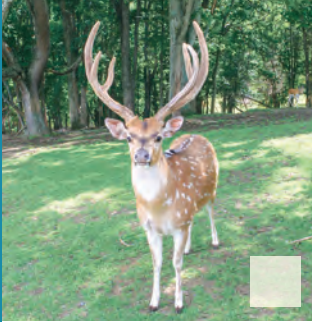
RANGE: India

DIET: Grasses, leaves

HEIGHT: 3 - 3 ½ feet

WEIGHT: 145 - 250 lbs

The Axis Deer is also called the chital which means "spotted" in Hindustani. The Axis Deer keeps its spots throughout its lifetime. It can also be distinguished by its bright white throat patch. The Axis Deer is often considered the most beautiful member of the deer family.



FUN FACT

The Axis Deer can live up to 22 years.

FALLOW DEER

Cervus dama

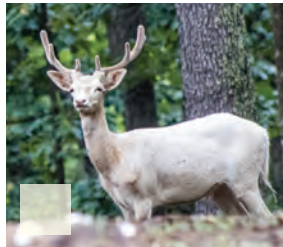
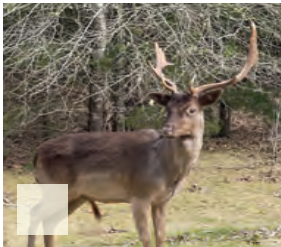
RANGE: Europe and Asia

DIET: Grasses, berries, nuts, herbs, bark, fungi, dead leaves

HEIGHT: 3 ½ feet

WEIGHT: 65 - 225 lbs

The Fallow Deer can be chocolate brown, white, or spotted. It has flattened antlers, shaped like the palm of a human hand. Fallow Deer have very sharp vision. They can see small details at distances of more than half a mile!



FUN FACT

In places where Fallow Deer are common, you will find trees stripped bare below the "browse line" of the deer - about four to six feet from the ground.

JAPANESE SIKA DEER

Cervus nippon nippon

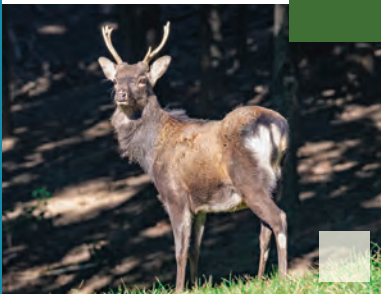
RANGE: Eastern Asia and Japan

DIET: Grass, acacia pods, wild melons, cucumber, tubers

HEIGHT: 2 - 3 ½ feet

WEIGHT: 55 - 120 lbs

Highly vocal, with more than 10 individual sounds, ranging from soft whistles to loud screams, the Sika deer is generally nocturnal, active mostly from dusk to dawn. It is regarded as sacred in Japan. The Sika deer herd is composed of one adult male, with up to twelve adult females and their young.



PERE DAVID'S DEER

Elaphurus davidianus

RANGE: China

DIET: Grasses, water plants

HEIGHT: 3 ½ - 4 feet

WEIGHT: Up to 440 lbs

Named for a French missionary working in China who first reported the breed to European scientists in the 1800s, these deer no longer live in the wild. The last herd remaining in China was eaten by Western and Japanese troops participating in the Boxer Rebellion. With the plight of the deer publicized, all remaining Pere David's Deer were gathered in England for the preservation of the species. The current world population stems entirely from this herd. The Pere David's Deer has a long tail, wide hooves, and branched antlers.



FUN FACT

The Chinese name for this deer translates as "four unlikes," because the animals appear to have the antlers of a reindeer, the neck of a camel, the foot of a cow, and the tail of a donkey.

ROCKY MOUNTAIN ELK

Cervus elaphus canadensis

RANGE: Mountains of Western US and Canada

DIET: Grasses, shrubs

HEIGHT: 4 ½ - 5 feet at shoulder

WEIGHT: 600 - 1,000 lbs

Also known as "wapiti," a Shawnee word meaning "white rump," the elk is a great jumper, similar in appearance to the antelope. It can run 30 mph for short distances and trot for miles. The male grows antlers at a rate of ½ inch to 1 inch per day in the summer, shedding them in the winter. The antlers can be as large as four feet from top to base and five feet wide. They may weigh up to 40 lbs. The moose is the only animal of the deer family larger than the elk.

CAN YOU IMAGINE?

This Elk's antlers may weigh as much as a four year old child.



FUN FACT

During mating season the male elk makes a distinctive noise, called burgling. It has been described as "loud, pleasant yodeling."



BISON

Bison bison

RANGE: North America
DIET: Grasses
HEIGHT: 5 - 6 feet
WEIGHT: Up to 2,000 lbs

Bison are the largest mammals in North America. Hunting decimated the bison population during the 19th century. In 1800, 60 million bison roamed the open plains of the US and Canada, but by 1900 only 100 remained. Happily, the bison is no longer endangered. More than 40,000 now live in state and national parks, zoos and ranches.

FUN FACT

Despite its enormous and clumsy appearance, the bison has amazing speed and agility, reaching speeds of 30 mph.

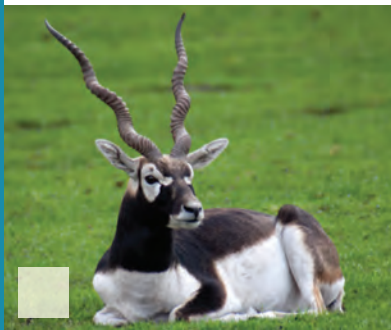
IS IT A BISON OR A BUFFALO?

BOTH. Either. Sort of. Bison is the correct term. Asian Water Buffalo and African Cape Buffalo are the only "true" buffalo. On the other hand, you're in good company in the US if you want to call it a buffalo, most folks do.

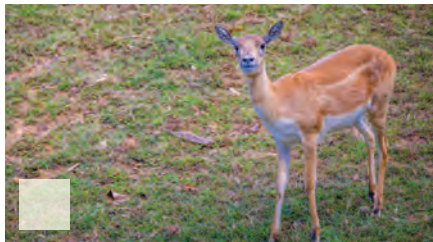
BLACKBUCK

Antelope cervicapra

RANGE: India
DIET: Grasses, leaves, pods, shrubs, flowers
HEIGHT: 2 ½ feet at shoulder
WEIGHT: 70 - 95 lbs



Blackbuck have long, ringed horns that spiral with three to four turns and are up to 28 inches long. Blackbuck antelope are extremely fast animals, reaching speeds of almost 50 mph when necessary. Their name comes from the dark coat the dominate males (left) achieve. Females (right) are a light tan.



FUN FACT

The males rut, or fight and spar, year round. Although they rarely hurt each other, during mating season only one male establishes dominance.

ARTIODACTYLA

Hoofed animals with an even number of toes

FAMILY: BOVIDAE

Hoofed, Hollow-Horned Animals
Antelope, Buffalo, Cattle, Oryx



ELAND

Taurotragus oryx

RANGE: Africa
DIET: Leaves, grasses, fruit
HEIGHT: 4 ½ - 6 feet
WEIGHT: 1,000 - 2,100 lbs

The Eland is the largest antelope in the world. In its native Africa, it is found primarily in national parks. During the past several decades game ranching has caused numbers to increase. The Eland looks much like an Ox. Both the males and the females have spiking horns that twist straight back from the face.

NILGAI

Boselaphus tragocamelus

RANGE: India
DIET: Trees, shrubs, fruit, sugar cane
HEIGHT: 4 feet at shoulders
WEIGHT: 500 lbs

An elegant animal and the largest antelope in India, the Nilgai is named for the color of the male, the "blue bull." It has slightly longer front legs than hind legs and a long, pointed head. The Nilgai has slender legs, striped ankles, and a tufted tail; the male has a tuft of hair under his neck. While females live in a herd of up to ten, the male is generally solitary.



NYALA

Tragelaphus angasii

RANGE: South Africa
DIET: Leaves, fruits, and grasses
HEIGHT: 2 ½ feet at shoulder
WEIGHT: 120 - 300 lbs

Nyala are very shy and are very cautious when approaching open spaces. Most sightings of wild Nyala are at water holes. They are most active during the early morning and late afternoon, resting in thick brush during the hottest times of the day. The alarm call is a sharp, dog-like bark.





SCIMITAR-HORNED ORYX

Oryx dammah

RANGE: North Africa
DIET: Grass, acacia pods, wild melons cucumbers, tubers
HEIGHT: 4 feet
WEIGHT: Up to 450 lbs



The Scimitar Horned Oryx is a true desert animal, able to live for weeks without water. It is now extinct in its native Sahara and its habitat is confined to a small area between Mauritania and the Red Sea. It has become easy prey to mounted and motorized hunters, and may face extinction in the near future.

FUN FACT

Both males and females have white stockings on their lower legs, a white rump, a white muzzle, and white spots above the eyes.

SCOTTISH HIGHLAND CATTLE

Bos taurus taurus highland

RANGE: Scotland (Domestic)
DIET: Grasses, brush
HEIGHT: 4 feet at shoulder
WEIGHT: 750 - 1,200 lbs

The Scottish Highland Cow is gentle and easily handled. It is a strong breed with excellent resistance to disease and for that reason, was first imported to the US in the 1800's by western cattlemen. The Scottish Highland sheds its long hair in the summer, which allows it to adapt to many climates.



FUN FACT

The cow's beautiful long hair acts as a rain slicker, easily shedding rain. Its short furry undercoat provides good insulation all year 'round.



WATER BUFFALO

Bubalus bubalis

RANGE: Asia
DIET: Grass, water, plants
HEIGHT: 5-6 feet
WEIGHT: Up to 2,200 lbs

Although there are less than 3,500 water buffalo in the United States, there are more than 180 million worldwide. The Water Buffalo is the primary draft animal of southern China and the rice growing countries of southeast Asia.

FUN FACT

Water Buffalo love to wallow in any water source. Even mud puddles!



WATUSI

Bos taurus africanus

RANGE: Africa (Domestic)
DIET: Grasses
HEIGHT: 4 - 5 ½ feet at shoulder
WEIGHT: 1,000 - 1,600 lbs

Also known as Ankole, the Watusi is named after the Watusi tribe of Africa. It dates back at least 6,000 years and is known as the "cattle of kings" because of its long horns. The horns can measure up to 10 feet from tip to tip with a base diameter of six inches.

FUN FACT

The Watusi's horns act as a cooling device, just like the radiator on your car. Blood circulates through the horn to cool before returning to the body.

WHITE-BEARDED WILDEBEEST

Connochaetes taurinus

RANGE: Africa
DIET: Grasses
HEIGHT: 4 ½ feet at shoulder
WEIGHT: 350 - 500 lbs

The Wildebeest is also known as a gnu. Both the male and the female are horned and bearded. It is primarily sedentary, which makes it an excellent target for predators. At night, wildebeests sleep on the ground in rows, allowing them both group security and space to run quickly.



FUN FACT

A baby Wildebeest can stand and run 3 - 7 minutes after its born.

YAK

Bos grunniens

RANGE: Central Asia, north of the Himalayas
DIET: Liche, herbs, grasses
HEIGHT: 5 feet at shoulder
WEIGHT: Up to 2,000 lbs

The Yak is a wild Ox, first domesticated in Tibet more than 3,000 years ago. While domestic Yak are now common, only 500 exist in the wild today. The Yak is agile, a good climber, and a great swimmer. Its long hair hangs nearly to the ground like a fringe protecting it while it roams in valleys and icy mountains at altitudes of nearly 19,000 feet.



FUN FACT

The Yak's digestive system helps to keep it warm. The contents of its stomach ferment at the internal temperature of 104 degrees Fahrenheit. This provides a "central heating system" that allows the Yak to survive at extremely low temperatures.

FAMILY: CAMELIDAE

Do not have hooves; they have two-toed feet with toenails and soft foot pads



BACTRIAN CAMEL

Camelus bactrianus

RANGE: Mongolia and China

DIET: Grass leaves, shrubs, thorns, dry vegetation

HEIGHT: 7 - 8 feet

WEIGHT: Up to 1,800 lbs

The Bactrian Camel has two humps. Its back is shaped like the letter B –“B” for bactrian! It has thick calloused “knees” and chest to protect its joints and body from the extreme heat of the sand when lying down. Fat stored in the hump allows the animal to survive for long periods without food.

ONE HUMP OR TWO?

Bactrian camels have two humps, like the letter “B” Dromedary camels have one, like the letter “D”

DROMEDARY CAMEL

Camelus dromedarius

RANGE: Africa and the Middle East

DIET: Grass, salty vegetation

HEIGHT: 6 - 8 feet

WEIGHT: 1,000 - 1,450 lbs

The Dromedary Camel is well adapted to the harsh climate and conditions of the desert. They can adjust their body temperature to conserve water, and have an extra set of eyelashes and can close their nostrils to keep out sand during storms. Camels can go 10-15 days without water.



LLAMA

Llama glama

RANGE: South America

DIET: Grasses, lichens, herbs, shrubs

HEIGHT: 3 - 4 ½ feet at shoulder

WEIGHT: 150 - 350 lbs

Around 3500 BC, settled crop growing tribes domesticated the Llama, using it as both a pack animal and a source of meat. Docile by nature, the Llama can carry up to 110 lbs for 15 miles a day at altitudes as high as 16,000 feet.

FUN FACT

When upset, the Llama spits a foul-smelling liquid. WATCH OUT!

FAMILY: GIRAFFIDAE

Shares a common ancestor with Cervids and Bovids (Giraffe, Okapi)



GIRAFFE

Giraffe camelopardalis

RANGE: Africa

DIET: Leaves, shoots of trees, and shrubs

HEIGHT:

Males (15 - 20 feet)

Females (12 - 17 feet)

WEIGHT:

Males (1,800 - 4,000 lbs)

Females (1,200 - 2,600 lbs)



The Giraffe is the tallest animal in the world; its long neck has seven vertebrae, like most mammals, but they are definitely elongated! Each individual Giraffe has a unique spot pattern. The ancient Romans called the giraffe “camelopardalis,” meaning “camel marked like a leopard.”

FUN FACTS

- The Giraffe has a 22 inch prehensile (grasping) tongue, that it uses to grasp and pull its food from the trees.
- The patterns on each giraffe are unique, so no two are ever alike.
- Male giraffes can grow up to 17 feet tall!
- Giraffe babies are born already 6 feet tall - Now that's a big baby!
- Mother giraffes are pregnant for 14.5 months!

Get Closer And Help Conservation Efforts

There has been a 40% decline in wild giraffe populations since 1999 due to habitat loss, habitat fragmentation, human population growth and poaching. The Virginia Safari Park is committed to protecting giraffes. Park guests assist us in this mission each time they participate in feeding the giraffes. The park's conservation program focuses on increasing Giraffe numbers through anti-poaching units, educational awareness, translocating animals for improved genetics, research and equipment. Have fun getting eye-to-eye with the world's tallest land mammal and feed them a tasty lettuce treat and helping ensure their future survival at the same time!



THE SAFARI DRIVE-THRU MAP

Hundreds of Free-roaming animals including: Llamas, Antelope, Deer, Elk, Bison, Ostrich, and more!

WHILE ON SAFARI:
Camel Feeding
STAY IN YOUR VEHICLE

Park Facilities

-  Handicap Parking
-  Restrooms
-  Gift Shop
-  Seating
-  Feeding Station

VirginiaSafariPark.com
   @virginiasafaripark



- | | | | |
|-------------------------------|---------------------------|----------------------|------------------|
| 1 Reptile House | 4 Giant AntEater | 7 Watering Hole Cafe | 10 Sloth |
| 2 Petting Area / Goat Feeding | 5 Kangaroos & Kookaburras | 8 Playground | 11 Tortoise Yard |
| 3 Spider Monkeys | 6 Budgie Aviary | 9 Pheasant Aviary | 12 King Cheetahs |

These are just a few of MORE THAN 30 EXCITING ANIMAL EXHIBITS you will find in the Safari Village!



FAMILY: SUIDAE Pigs

KUNE KUNE PIG

Sus scrofa domesticus



RANGE: New Zealand
DIET: Grasses
HEIGHT: 1 – 2 feet at shoulder
WEIGHT: 175 – 265 lbs

The Kune Kune Pig is one of the smallest breeds of pig. Pronounced "Cooney, cooney" it means fat and round in the Maori language. Kune Kune Pigs are intelligent, resourceful, and affectionate, with a passion for food and a good scratch.

FUN FACT

Kune Kune Pigs were in danger of extinction until a breeding program was started in the 1970's in New Zealand.

WARTHOG

Phacochoerus africanus

RANGE: Sub-Saharan Africa
DIET: Omnivorous. Grasses, fruits, roots, insects, carrion
HEIGHT: 2 – 2 ½ feet at shoulder
WEIGHT: 100 – 300 lbs

Warthogs have visible tusks that protrude from their mouth and curve upwards. These are constantly growing canine teeth, considered ivory, similar to elephant tusks. They are primarily used as a defense against predators. When grazing warthogs bend their front feet backwards, feeding on their "knees".



FUN FACT

Warthogs inhabit burrows. Although they are able to build their own, they typically occupy abandoned burrows left behind by aardvarks and other animals. They reverse into their burrow so that their heads are facing the entrance. This keeps them ready to fight or flee if needed.

GRANT'S ZEBRA

Equus quagga boehmi

RANGE: East Africa
DIET: Grasses
HEIGHT: 5 feet
WEIGHT: 500 – 700 lbs

Each Zebra's stripes are unique, just as human's fingerprints are unique. The Zebra's color pattern make it extremely visible against green backgrounds but almost invisible in tall grasses. Herds are composed of one male and one to six females and their young. Young males leave the herd in their second year and form bachelor groups.



PERISSODACTYLA

Hoofed animals with an odd numbers of toes

FAMILY: EQUIDAE Known as the horse family (Horse, Donkeys, Zebra)

FAMILY: RHINOCERIDAE

SOUTHERN WHITE RHINO

Ceratotherium simum simum



RANGE: Southern Africa
DIET: Grasses
HEIGHT: 5 – 8 feet
WEIGHT: 4,000 – 6,000 lbs

White Rhinos are one of five rhino species and are the most abundant out of all of them. They can run up to 25 mph. Their gestation period is 16 months long! Water can be scarce in Africa, so Rhinos can go up to four days without water. They can live to be more than 40 years old and are the 2nd largest land animal. Rhinos are very social animals and can live in groups of up to 20 individuals, mostly mothers and calves.

FUN FACT

All horns (antelope, cows, goats, etc.) are made of Keratin. The Rhino's horn doesn't have a core like the other animals, that is why they are different.

RHINO CONSERVATION EFFORTS

In the wild, it is estimated that one rhino is killed every ten hours for its horn. Rhino gestation is 16 months, resulting in a slow increase in population numbers toward recovery. Therefore, each calf born is a reason to celebrate! Rhino mothers, Samira and Kya, were imported from South Africa in 2012 with two other White Rhinos to protect them from rampant poaching. To date, this group of imported rhinos has produced eight healthy calves. Zoofari Parks is dedicated to saving the future of wild rhinos and has donated more than \$12,000 in the past three years to the International Rhino Foundation.

STRUTHIONIFORMS
Birds that resemble the Ostrich

FAMILY: STRUTHIONIDAE
Flightless and mostly large and long-legged birds

EMU
Dromaius novaehollandiae

RANGE: Australia
DIET: Grains, berries, bugs, snakes, frogs
HEIGHT: 5 - 6 feet
WEIGHT: Up to 150 lbs

The Emu is the third largest flightless bird. It can reach speeds up to 30 mph, with strides covering nine feet. The adult Emu can produce offspring well past the age of 35 years; Emu eggs are avocado green and incubate for 54 days before hatching. The male Emu sits on the eggs until hatching, caring for the chicks for their first eighteen months.



FUN FACT

The Emu has been Australia's national bird since 1960.



OSTRICH
Struthius camelus

RANGE: Africa
DIET: Grass
HEIGHT: 8 feet
WEIGHT: Up to 300 lbs

The Ostrich is the world's largest bird. Ostrich are fast animals, reaching speeds of 35 mph for up to 30 minutes. The Ostrich's long, powerful legs are its primary means of defense. Contrary to popular belief, the Ostrich does not bury its head in the sand. Males are black; females are gray. The Ostrich has the largest egg of all birds, but the egg is the smallest in comparison to the size of the bird.

FUN FACT

The Ostrich is the only two-toed bird!

RHEA
Rhea americana

RANGE: South America
DIET: Grass, insects
HEIGHT: 5 feet
WEIGHT: 60 - 80 lbs

The Rhea is the fourth largest flightless bird. The male builds a nest in which all the females of the harem lay their eggs. The Rhea runs rapidly on its long legs, at speeds of up to 40 mph. Rhea travel in family groups of about six birds except during mating season when up to 25 may form a flock.



Animal Encounters!

Rhino Encounter

\$50 per person



Penguin Encounter

\$40 per person



Sloth Encounter

\$40 per person



Take home souvenir feed cups!

Thank you for your help!

A percentage of your encounters proceeds directly to our conservation programs.

SAFARI VILLAGE

FEED BUNDLES
AVAILABLE IN
THE GIFT SHOP!



THE KING CHEETAH!

The Virginia Safari Park is the only place in the United States to see the rare King Cheetah. Originally thought to be a separate subspecies, the King Cheetah is an African cheetah that features recessive genes. This color variation is naturally occurring and creates a unique pattern. Their extra thick coat features thick blotchy patterns instead of the defined spots. Be sure to stop by and compare our Kings' stripes to our regular cheetahs while you're exploring the Village!



VISIT OUR SAFARI VILLAGE

Stretch your legs and unwind on the paths of the Safari Village. Waddle next to a penguin, feed a giraffe, or feed your barnyard favorites. Visit with lemurs, giant anteaters, monkeys, tigers, and cheetahs or get up close with a giant tortoise. Don't forget to visit the Budgie Adventure Aviary and the Reptile House!

Giraffe Tower

Feed the giraffes romaine lettuce on the giraffe-viewing platform! See their tongues for yourself when you feed at head height! **Don't forget romaine, available at the Gift Shop!**



Petting Area

Enjoy feeding and petting all of your farmyard favorites, including goats and kids! **Feed Cups are available in the Gift Shop.**

Budgie Adventure Aviary

Step inside to feed the sweet and colorful tiny birds, which will land on your hand. **Budgie Feeding Sticks are available in the Gift Shop.**





SAFARI VILLAGE



Tiger Territory

Observe our Bengal tigers as they play in their yard, lounge in the shade, or cool off in their pool.

Penguin Pool

Waddle by to visit our African penguins. Be sure to check out our penguin encounters too!



Kangaroo Walk-About

Enjoy a walk or a hop through the Kangaroo Walk-About! Be on the lookout for joeys, and listen for the song of the kookaburra along the way.



Reptile House

Stop by the reptile house to see lizards, snakes and tortoises from around the world.



Gold Headed Lion Tamrin

When you visit the Safari Village, you may hear high pitch chirps and squeaks as they stay in touch with their family group.

Lemurs

There are more than 100 species of lemurs and you can see ring-tailed lemurs and black and white ruffed lemurs in the Safari Village.



Spider Monkey

Spider monkeys get their name from the way their long limbs and tails resemble spider legs as they swing through the treetops.



Squirrel Monkey

Watch the squirrel monkeys playing in their habitat.



DON'T FORGET TO STOP BY THE
SAFARI TRADING POST
GIFT SHOP

located near the entrance

- Huge selection of gifts and souvenirs for all ages.
- Cold drinks, quick snacks
- Additional animal feed
- Season passes



pick up souvenir giraffe feed cups here!



located in the Village
HUNGRY?
 We've got you covered!

- Pizza
- Burgers
- Hotdogs
- French fries
- 32oz Icees
- and More!

KIDS MEAL

Chicken tenders or hotdog, with fries, Capri Sun, & Souvenir Safari Hat!



PARK RULES

REMAIN IN YOUR VEHICLE!

Anyone found outside of their vehicle will face immediate expulsion from the park.

- Feed only from the buckets. **NOT FROM YOUR HANDS!** Animals may nip. Scattering grain will allow shy animals to come to your vehicles.
- **WHEN FEEDING**, pull over to the right side on flat areas to let others pass.
- **ALL DOORS MUST REMAIN CLOSED. NO SLIDING OR HATCH DOORS MAY BE OPEN. OPEN WINDOWS.**
- Keep windows rolled down all the way when feeding animals. **NEVER** roll up window when animal is attempting to feed. Injury to the animal or the vehicle is possible.
- If you are in need of help or assistance, honk your horn to notify the park ranger.
- **NO OUTSIDE ANIMAL FEED ALLOWED.**
- **NO PETS ALLOWED ON PARK PROPERTY.**
- **NO SMOKING ALLOWED**, unless in designated area.

NOTICE: PLEASE READ

All persons entering Virginia Safari Park do so at their own risk. We will not be responsible for injuries to any individual or damage to any vehicle.

©2024 Virginia Safari Park
229 Safari Lane, Natural Bridge VA 24578
www.VirginiaSafariPark.com | 540-291-3205